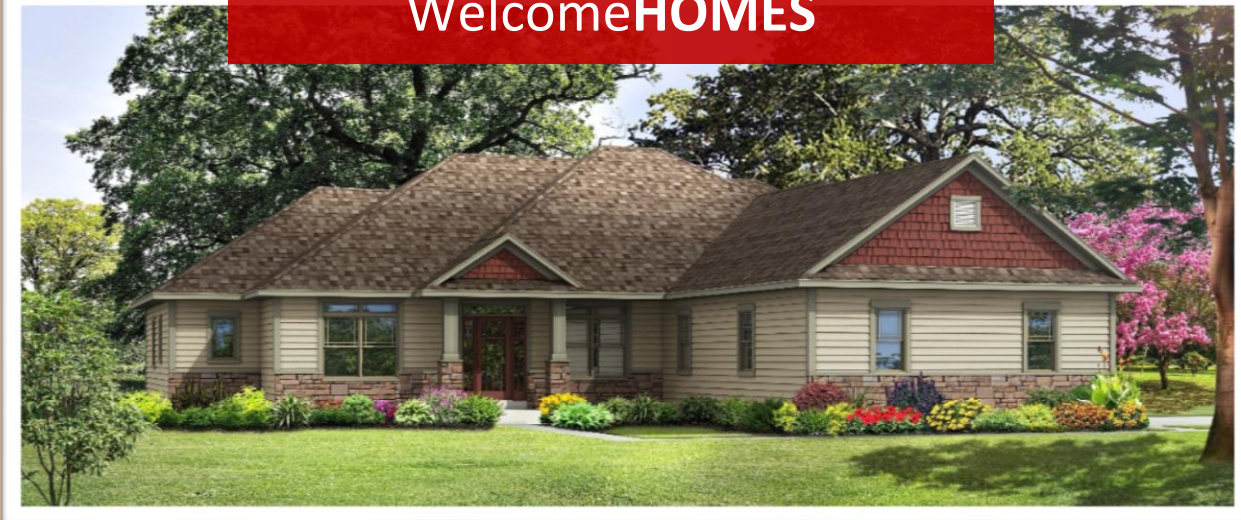


Newport Builders, Inc.  
WelcomeHOMES



# THE SCOTTSDALE

2412 sqft · 3 Beds · 2 ½ Baths · 3 Car

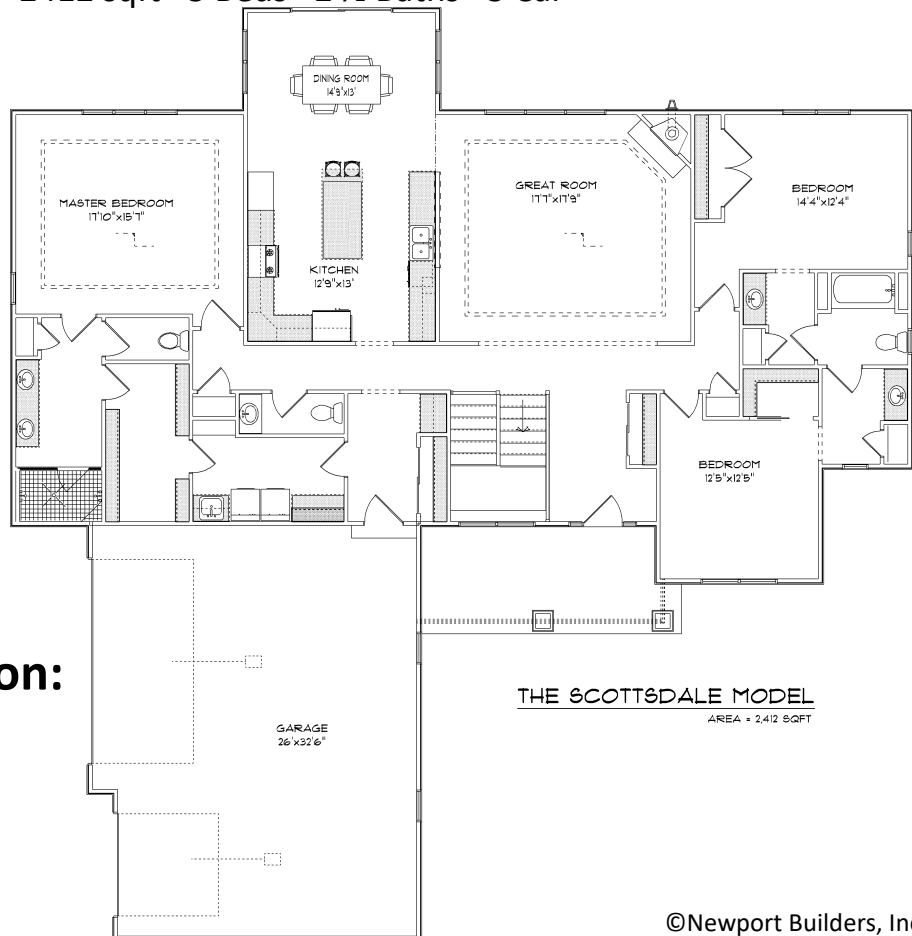
**30930 Morning  
View Cr.**

Rivers Turn  
Subdivision

Town of Waterford

\$435,900

**Estimated Completion:  
March 2017**



©Newport Builders, Inc.

\*\*Features and pricing subject to change without notice. Photo shown may reflect varying features, materials, and/or colors\*\*

Contact a Newport Builders sales representative for more information

8338 Corporate Dr. #300 Mt. Pleasant, WI 53406  
262-632-7373 [www.newport-builders.com](http://www.newport-builders.com)

# Newport Builders, Inc.

## WelcomeHOMES

### Included Amenities

- Vinyl double hung windows with low-e
- Power vented 50 gallon hot water heater
- Basement bath rough-in
- Energy efficient direct vent fireplace
- Insulated steel garage door with Stockton windows
- 6 panel pine doors & pine trim
- Baxter maple cabinets in the kitchen with crown molding and staggered heights and depths
- Kohler/Sterling plumbing fixtures & faucets
- Granite countertops throughout
- Carpet, hardwood and Dura Ceramic floors
- Focus on Energy rated stainless steel dishwasher
- Stainless steel space saver microwave/range hood, vented to the outside
- DuPont/Tyvek 10 yr. Weatherization Warranty
- 3<sup>rd</sup> party Air Infiltration Diagnostic Testing
- 95% Comfort System with a 10 year parts warranty
- Focus on Energy home & Green Built Home

**For more information or to schedule a walk through, please  
contact Kimberly Hood**

262-632-7373 · 262-770-2672 · [kim@newport-builders.com](mailto:kim@newport-builders.com)



8338 Corporate Dr. #300 Mt. Pleasant, WI 53406  
262-632-7373 [www.newport-builders.com](http://www.newport-builders.com)