

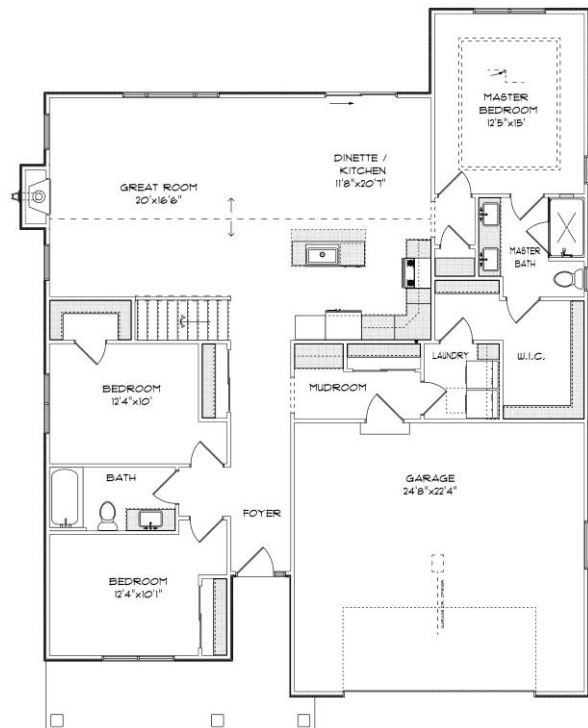


THE HEMSWORTH

6101 Fox Run Lane
Christina Estates Subdivision
Village of Mt. Pleasant
\$492,900

Highlights:

- 1652 sq. ft.
- 3 beds, 2 baths
- 2 car garage
- Look out basement with deck off dinette



©Design Basics, LLC

Features and pricing subject to change without notice. Photo shown may reflect varying features, materials, and/or colors

**Contact Kimberly Hood at 262.770.2672 for more information

8338 Corporate Dr. #300 Mt. Pleasant, WI 53406
262-632-7373 www.newport-builders.com

Newport Builders, Inc. WelcomeHOMES

Included Amenities

- Vinyl single hung windows with low-e
- Power vented 50-gallon water heater
- Basement bath rough-in
- Energy efficient direct vent fireplace
- Insulated steel garage door with opener
- 2 panel, flat panel stained interior doors
- Maple cabinets
- Kohler/Sterling faucets
- Tall vanity in both bathrooms
- Quartz countertops throughout
- Ceramic tile shower in master bath
- Luxury vinyl plank and carpet
- Focus on Energy rated stainless steel dishwasher
- Space saver microwave/range hood, direct vented to the outside
- DuPont/Tyvek 10 yr. Weatherization Warranty
- 95% Comfort System with a 10-year parts warranty

**For more information or to schedule a showing, please
contact Kimberly Hood.**

262-632-7373 · 262-770-2672 · kim@newport-builders.com

