

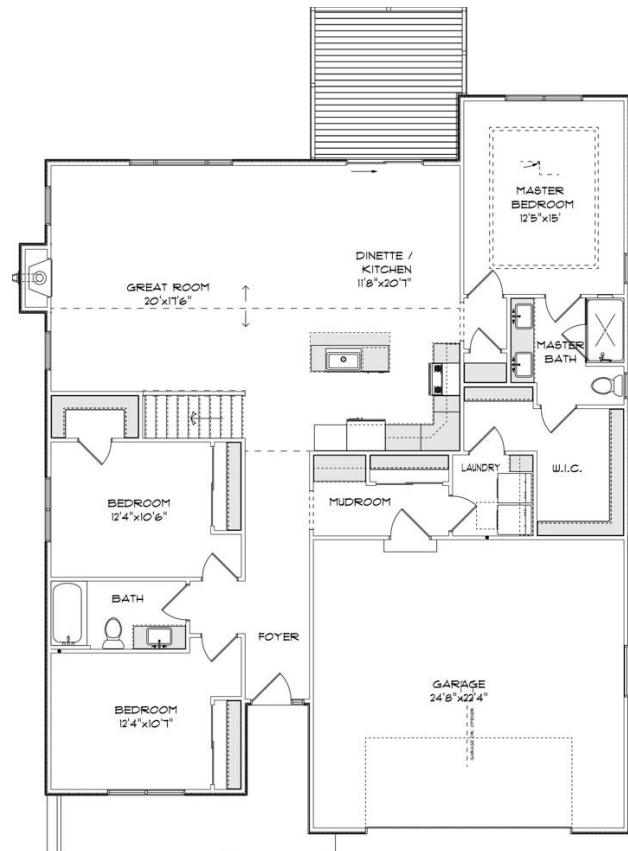


# THE HEMSWORTH

1012 Fairway Dr.  
Fairway Woods Subdivision  
Village of Twin Lakes  
\$514,900

## Highlights:

- 1754 sq. ft.
- 3 beds, 2 baths
- Walkout basement with deck off dinette



©Design Basics, LLC

\*\*Features and pricing subject to change without notice. Photo shown may reflect varying features, materials, and/or colors\*\*

\*\*Contact Kimberly Hood at 262.770.2672 for more information

8338 Corporate Dr. #300 Mt. Pleasant, WI 53406  
262-632-7373 [www.newport-builders.com](http://www.newport-builders.com)

# Newport Builders, Inc. WelcomeHOMES

## Included Amenities

- LP Smart Siding
- Vinyl single hung windows with low-e
- Power vented 50-gallon water heater
- Basement bath rough-in
- Energy efficient direct vent fireplace
- Insulated steel garage door with opener
- 2 panel, flat panel primed solid core Masonite doors
- Maple cabinets
- Kohler/Sterling faucets
- Tall vanity in both bathrooms
- Quartz countertops throughout
- Ceramic tile kitchen backsplash
- Ceramic tile shower in master bath
- Luxury vinyl plank and carpet
- Focus on Energy rated stainless steel dishwasher
- Space saver microwave/range hood, direct vented to the outside
- DuPont/Tyvek 10 yr. Weatherization Warranty
- 95% Comfort System with a 10-year parts warranty

**For more information or to schedule a showing, please  
contact Kimberly Hood.**

262-632-7373 · 262-770-2672 · kim@newport-builders.com

